



Accounting Backbone

Discovery's financial system provides complete financials for both our Public and Private companies. Operational modules are supported by our Financial System to provide customers with a completely integrated ERP (Enterprise Resource Planning) solution. Discovery's ERP solution provides sole source entry for all transactions and a single database for inquiries and reporting.

Discovery's General Ledger provides quick access and easy manipulation of mission-critical data. You can process inter-company transactions, establish flexible accounting periods and an unlimited number of budgets.

Accounts Receivable and Payable (A/R + A/P)

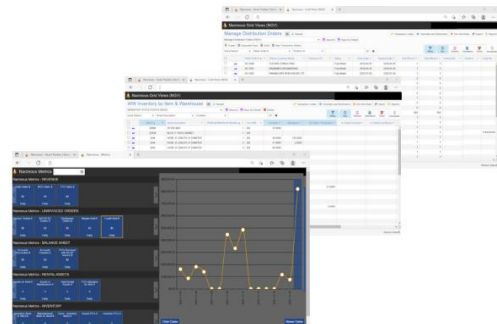
Accounts Receivable improves your cash flow and enhances customer satisfaction with streamlined automation of your collections process. Gain complete control of your Accounts Receivables and invoicing processes.

Accounts Payable offers several options to streamline your approval process, automate vendor-related tasks and a simplified vendor quick pay process with both check runs, automated ETFs and one-off pays.

Plus, Discovery has partnerships with all the major e-invoice companies, so invoices are electronically sent with no labour-intensive re-entry.

Bank Account Reconciliation

Cash Management/Bank Rec allows you to reconcile all your bank accounts quickly and accurately, as well as perform bank transactions with pinpoint accuracy. This feature integrates seamlessly with all of Discovery's financial modules for automatic cash transactions and secure record keeping that flow through your operation.



Multi Currency


Multi currency Management provides robust multi currency and analysis capabilities so you can optimize your international opportunities. You can maintain an unlimited number of currencies and exchange rate schedules, update exchange rates daily and post realized and unrealized gains or losses due to currency fluctuations.


PO Visibility


Businesses can benefit from the advanced tracking capabilities of the Purchase Order module. You can monitor the purchase of consumables and fixed assets and catch under shipments from your vendors. Discoveries' sophisticated PO variance report is just another way to streamline operations and improve your cash flow.



Financial Statements

 Balance Sheet

 Statement of Cashflows

 Income Statement

Discovery Solutions BAT Accounting

Discovery has leveraged years of operational performance data and customer feedback to produce the new Gold Standard of accounting software. The new BAT accounting system on our web-based SaaS system provides users with unparalleled functionality and financial visibility.

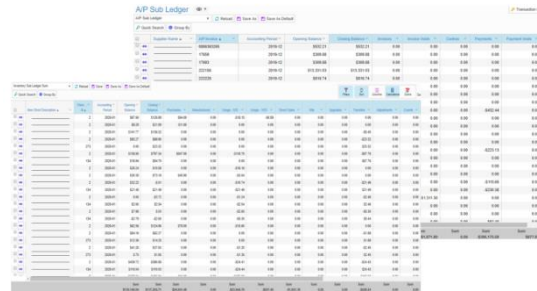
When looking at the ERP landscape, traditionally ERPs have had two silos:

- Financial (G/L Account, Branch, Dollars)
- Sub-ledger (Customer, Item, Supplier, Service Order, Units, Price/cost per item, etc.)

With BAT, each record contains both the financial and the sub-ledger components, therefore there is no reconciling or balancing required. This not only saves a user time at month and year-end, but it minimizes error.

The new accounting module includes:

- ✓ The BAT Accounting System
- ✓ Financial Statement drill into (PIT)
- ✓ AS AT Financial Analysis module (PIT)
- ✓ On-line Trial Balance (PIT)

A screenshot of the 'AP Sub Ledger' software interface. It displays a complex table with multiple columns representing different financial and operational data points, such as dates, amounts, and transaction details. The interface includes various filters and navigation options at the top.

Financial Analysis Module

The new financial analysis module in Discovery's BAT system helps your accounting team with data transparency and accuracy. The BAT's ability to drill down to the root transactions is what separates it from other ERP software on the market. You can run AS ATs for AP, AR, WIP, Inventory, Variance and FA which means you always have a reliable frame of reference.

Point in Time (PIT)

The BAT accounting system is a large data warehouse, hosting all your financial and operations data. The PIT tables which Discovery has created allows you to mine the data from your AS ATs and Financial Statements enabling you with a click of a mouse to understand details associated with every transaction.

Management Information

The Accounting module provides management with the right information to make key operational and strategic business decisions. The information can be extracted and analyzed based on your business drivers and preferences.

Integration

The Accounting software is the backbone to Discovery's other operational modules, Distribution, Rentals, Manufacturing, and Field Services.